

LONGTON PARISH COUNCIL NEWSLETTER SUMMER 2011



CHAIRMAN'S REPORT 2011

It is that time of year again when we write to tell you what your Parish Council has been doing and what is planned for the coming year.

As you know, in May we had the elections for South Ribble Borough Council, but you may not have realised that on the same day the members of the Parish Council were also elected. Please don't think you are losing your memory, you did not have to vote because nobody stood against the existing Members, so thank you for your faith in us. Two of our long serving members in Longton Ward did not stand again. Judith Crichton and Stewart McLoughlin both served on the Council for a decade and a half, and worked hard throughout their time in office. We will miss them and I would therefore like to take this opportunity to thank them for their efforts on your behalf.

Their departure also means that we have two vacancies in the Longton Ward and two in New Longton Ward. We would welcome new members who can be co-opted onto the council. The official notices inviting applications will appear on the Parish Council notice boards dotted around the parish.

During the year many of you attended the Parish Council meeting and the SRBC Area Committee meeting when proposals for housing and other development in the parish were revealed and discussed. Some of those proposals had been made by the landowners and some by property developers; those proposals were not made by the council. You made your views very clear as did the Parish Council. The next phase of the development plan is for South Ribble Council to decide which areas should be available for development in accordance with the area plans and local needs. These plans will be published in September. You may be sure that the Parish Council has and will oppose any development in the Green Belt. The recommendations of SRBC will be discussed at our meeting on the first Tuesday in October. The Parish Council has also constantly opposed unnecessary development in New Longton where there is no local need, and as residents know is beyond the capacity of the drains.

The Parish Council is the Trustee of the Longton Victory Memorial Recreation Ground and as such helps to support the clubs that are based there. The Sports & Social Club has made huge improvements to its facilities and is an excellent venue for many functions and activities for the parish.

This year the Parish Council is taking over the provision of the Christmas trees in both villages and we will be illuminating them with energy saving LED lights.

If you do have concerns and want to have your say please come along to the Parish Council meetings which are on the first Tuesday of each month (except August when we recess).

Graham Gooch - Chairman



CHRISTMAS ROSEBOWL COMPETITION



This competition which is open to all shops, offices, pubs and churches will once again be held this year. The rules are very simple - your display must be easily visible at street level. No entry form is needed - create a display and remember that this year you could be the winner.

Winner 2010

PETAL AND TWIG LIVERPOOL RD LONGTON

Commendation:

BOW PEEP LIVERPOOL RD LONGTON

CHRISTMAS HOUSE DISPLAY COMPETITION VI PEACOCK CUP (NEW LONGTON) CHRISTMAS CUP (LONGTON)

This competition which is open to all residents will once again be held this year. A panel of judges will assess the best decorated and attractive houses in both Longton and New Longton

Winner VI Peacock Cup 2010: Peter Johnson

East View Brownhill Lane New Longton

Commendation: Mr & Mrs Whitfield

222 Chapel Lane New Longton

Winner Christmas Cup 2010: Mr & Mrs Eastham

31 Shirley Lane Longton

Commendation: Mr & Mrs Singleton

5 Intack Road Longton

PARISH COUNCIL PRECEPT 2011/2012

The Parish Council is pleased to be able to confirm that it has set its Precept for 2011/2012 at the same level as the previous year. It has made budget provision to continue with the Lengthsman Scheme which enables low level enhanced services to be delivered by Peter who many of you will have seen around the villages undertaking various cleaning and tidying duties. It will also continue to make representation concerning planning applications something which has been a feature of the last 12 months with many large scale development propositions having been proposed. The Council is now considering how to move forward with the erection of our annual Christmas trees now that SRBC are unlikely to be able to make any contribution and it is also considering the improvement of its communication by looking to issue this newsletter on a 6 monthly rather than annual basis. It is expected that the Christmas Competitions and Summer Garden competitions will continue. The Council will continue to act as the Trustee for Longton Victory Memorial Recreation Ground supporting the users wherever it can in developing the great local facilities that exist there.

LONGTON BRICKCROFT

We are now approaching summer on the Brickcroft and the reserve is looking glorious. The trees are in full leaf and wildflowers are in bloom, look out for marsh orchids, ox-eye daisy, yellow rattle and ragged robin to mention a few.

Our water birds have been busy rearing young and you should be able to see cygnets, coot and moorhen chicks plus lots of mallard ducklings. A great sight is spotting the great crested grebe chicks with their black and white striped heads. These young birds take lifts around the pond on their parent's backs until they get too big to carry.

The hard work carried out over the winter by volunteers has really paid off. We follow a programme of coppicing and clearing which is essential to maintain a reserve with diverse habitats supporting a wide range of species. The new area of shallow water created on the south pond last year has been very attractive to dragonflies and damselflies. A number of new species have been recorded including the Four Spotted Chaser, Broad Bodied Chaser, Black Tailed Skimmer, and Emerald Damselfly. This brings the total number of dragon and damselfly species on the Brickcroft to 13 which is extremely pleasing.

We would like to say a big thank you to all the volunteers who help both on site and in the visitor centre.

The majority of dog walkers on the reserve are good, responsible owners but there is still a minority who do not clean up after their dogs and allow them off the lead. The council neighbourhood officers will issue £75 fixed penalty notices to anyone found offending.



**LONGTON VM
SPORTS & SOCIAL CLUB**

School Lane, Longton, Preston, PR4 5ZA Telephone 01772 616974

SPORTS PROGRAMME 2011

Crown Green Bowling

League Matches Monday-Friday, April to Sept
 Winter Leagues Thursday Afternoon & Evenings, Oct to Jan
 Tuition Sunday Mornings, (Summer Only)
 Ladies Bowling Monday Afternoons (Summer Only)
 Inter-schools League Thursdays In June 3.30 - 6.00

Indoor Bowling
 During Winter



Snooker
 League Matches Every Tuesday Night, Sept-March

Dominoes
 League Matches Every Monday Night, Oct-March

Longton Tennis Club
 League Matches April - Mid August
 Autumn League Sept - Mid Dec
 Indoor Winter Tennis
 Adult Social Tennis Thursday Evenings Apr - Sept
 Junior Teams






**LONGTON VM
SPORTS & SOCIAL CLUB**

School Lane, Longton, PR4 5ZA

**TRIVIA QUIZ
NIGHT
EVERY
THURSDAY
STARTS
9.30pm
EVERYONE
WELCOME**

24th September
St Patrick's
"Other Night"
Live On Stage
"THE RYANS"



NEW LONGTON FLOWER SHOW 2011

This year the event will take place on Saturday 3rd September 2011 in New Longton Village Hall. (2pm - 4.30pm). Last year's show was a great success. There are many and varied classes. Any one can enter any class and further information will be available throughout August with schedules in local shops throughout Longton and New Longton. There will be the usual awards of cup, trophies and cash prizes. Prizes are expected to be presented by the Mayor of South Ribble Borough Council.

WHY NOT COME ALONG AND SUPPORT THIS ANNUAL VILLAGE EVENT WHICH IS OPEN TO ALL

At the show, awards will also be made to the winners and runners up in the local

BEST KEPT GARDEN COMPETITION 2011

which is due to be held once again this year. Judging for this event normally takes place around this time of year and so hopefully you are all now working hard on your gardens to make sure they are at their best and make the competition even harder for our councillor judges to consider.

NEW LONGTON VILLAGE HALL

Good news is reported from the Committee of NLVH. Bookings for the use of the hall are increasing and the focus is on making the use of the hall a pleasant experience. The Committee has secured grants to enable a new kitchen to be installed and also to increase the halls energy efficiency by lowering ceilings and installing cavity wall insulation. In addition a programmed maintenance schedule has been devised to ensure that the fabric of the building both inside and out is maintained. The hall is currently used by many regular groups including New Longton Artists, sequence dancing, yoga, slimming world, Zumba, Fitness League and Pilates, badminton, judo, gardening classes, under 5's playgroup and also for private party bookings. Annual events such as the flower show, art exhibition, fine art fair, table top sales and craft fairs all add to what is a very well used facility.

Some years ago evening entertainment was a regular feature with plays, artists and bands etc. The costs of putting on this kind of entertainment do however need to be recouped by ensuring a good attendance.

The Committee are anxious to attract people back to evening and weekend entertainment but to do this they need input from the local community.

What kind of entertainment would you wish to see?

Please contact Bernard Kershaw 01772 616119 or Margaret Kearns 01772 614264 with your ideas

HOW TIMES HAVE CHANGED!!

Looking back it seems a long time since the heady days of quality frequent public transport facilities in Longton and New Longton. Up until the late sixties a direct train service operated from Southport to Preston stopping at both Longton and New Longton stations before closure in 1967. At that time regular bus services also operated at 10-15 minute intervals from Longton and New Longton (who remembers the P3 and P4 services run by Ribble Motors?) At the Anchor Inn Hutton the P5 was operated by Preston Corporation with a 7.5 minute service to Preston. When deregulation came in 1986 many things changed, services were axed, competition became fierce but surprisingly perhaps New Longton benefited with increased bus services run by the Zippy Bus Company (a bus almost every 5 minutes). Sadly this company went to the wall and was taken over by Stagecoach who also took over Preston Bus prior to being ordered to relinquish the acquisition which is now owned by a Midlands company. Our current service the 3B now only runs once an hour and reaches Preston after a considerable detour around the Broadgate area. On Sundays and in the evening the service is even less frequent. The current 3B is underpinned as are a number of bus service routes by Lancashire County Council subsidies. Pressure is being brought to bear upon LCC to ensure that these services do provide the requisite passenger contribution otherwise they too will fall to the axe. Passenger numbers so we believe are holding up on our last remaining bus service route - we can only hope that there will be no further worsening of the situation - it really is a case of 'use it or lose it'

Mums & Tots

Every Tuesday
During Term Time

9:30 - 11am

Longton Sports &
Social Club

Price £2.00
50p for additional child

FRIDAY NIGHT JAM



FRIDAY NIGHT JAM IS FOR
AGE 11-15, HELD ON FRIDAY
NIGHTS 7:30 - 9:30 AT
LONGTON PRIMARY SCHOOL.
WE HAVE MESSY GAMES,
UPFRONT CHALLENGES,
THEME NIGHTS, AND
TRIPS AWAY!
GET DOWN, BRING A FRIEND
AND JOIN THE JAM!!

Longton
**BONFIRE &
FIREWORKS**

Saturday 5th November
Victory Memorial Ground,
Longton
Starts: 6:30pm
FREE ADMISSION

seasons

Are you semi - retired?
Do you have time on your hands?
Do you struggle getting to church?

Then Seasons is for you...
Seasons is a short church service
that is held weekly. It includes a
free lunch so you can sit down,
relax and enjoy great food
with great company.

Wednesdays (weekly) and Fridays
(fortnightly) 11am - 12:45pm
at Longton Sports and Social Club,

01772 457973
info@longtoncommunitychurch.co.uk
www.longtoncommunitychurch.co.uk

Longton
COMMUNITY CHURCH

LONGTON SPRING FETE 2011

Unsettled weather conditions did not dampen the spirits of visitors to the fête which was held once again at the LVRMG in School Lane and was a very well attended event. There was an array of stalls on the field, the majority of which represented charitable causes. Donkey rides, fairground attractions and the Punch & Judy show were as popular as ever. Fun pillory/stocks were a great source of fun with those at the receiving end of being drenched taking it all in good part! Sport



events included the Archery Range run by the Scouts and Fun Bulls eye target bowling on the bowling green. Lancashire Constabulary's Neighbourhood Policing Team was kept busy security coding pedal cycles & distributing crime prevention information. We were delighted to have two long-serving and impressive horses of the Constabulary's Mounted Team present at the fête, 16 year old Pendle and 8 year old Overton. They attracted much interest and many questions were asked of their police riders by

members of the public. The excellent dance and musical entertainment was thoroughly enjoyable and was provided by dancers of the Mary Whelan School of Irish Dancing; Preston musicians Neil Brook (bouzouki and hurdy-gurdy) and Tom Walsh (accordion) playing Irish and French folk tunes. A 16 person folk ensemble from Southport, led by Sarah Marks, was also present playing and dancing to and also encouraging the audience to get up and dance to English, Irish and Scottish traditional tunes. Refreshments comprised non-alcoholic beverages & delicious home made cakes in the Scout tent with drinks of the alcoholic variety available in the Sports & Social Club. The fête culminated in a fun dog show with prizes provided by Pets at Home from Preston presented to lucky canine winners and owners in nine categories. The judging was done by the treasurer for Guide Dogs, a charity represented at the fête, Wayne from Pets at Home and County Councillor Mike Otter, the LCC Parish Champion. Many people commented on the friendly and lively atmosphere at the fête which "had a buzz about it". Such comments make all the hard work done to organise the event worthwhile!



YOUR MEMBER OF PARLIAMENT IS:

LORRAINE FULLBROOK

Constituency: South Ribble

Contact details: Telephone: 020 7219 7217

E-mail: info@lorraine-fullbrook.com

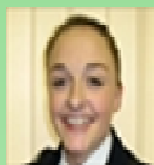


Lorraine holds regular advice surgeries in her South Ribble office. If you would like to make an appointment please call on the above number or e-mail with a short summary of your issue and you will be booked in to the next available appointment.

NEIGHBOURHOOD POLICING TEAM

The Policing Pledge sets out minimum standards of service that you can expect to receive from them. These range from standards for answering calls promptly, how you can have a say over how your neighbourhood is policed, how you can expect to receive up to date information about local crime and how you will be supported if you are a victim of crime.

Here are the officers that are dedicated to policing where you live



PCSO 7888 Emily Ashton



PC 1088 Andy Sumner

TELEPHONE CONTACT DETAILS 01772 415642 (voice mail out of hours)

If you want to talk to your local officers about things that are happening in your area, you can email them @ CM.NPT@lancashire.pnn.police.uk

Please don't use this address to report crimes or incidents
use 999 for emergencies or 0845 125 35 45 for non-emergencies.

You can also write to them at: Penwortham Police Station
Liverpool Road Penwortham PR1 0HT

POLICE AND COMMUNITIES TOGETHER (PACT) MEETINGS

These meetings give you an opportunity to talk face to face with your Neighbourhood Policing Team to discuss issues and how they might be addressed

Please check the web page for full details of meeting dates and current priority local issues:

<http://www.lancashire.police.uk/neighbourhood/new-longton-and-hutton-east>

YOUR PARISH COUNCILLORS

GRAHAM GOOCH (CHAIRMAN)
57 SHIRLEY LANE
LONGTON
PRESTON
PR4 5WJ
TEL 01772 614974

PHIL ARTIS (VICE CHAIRMAN)
128 MARSH LANE
LONGTON
PRESTON
PR4 5YL
TEL 01772 617078

SUSAN FOX
33 DALE AVENUE
LONGTON
PRESTON
PR4 5YJ
TEL 01772 619270

PAUL HOLMES
9 EASTFIELD DRIVE
LONGTON
PRESTON
PR4 5ND
TEL 01772 611545

JOAN WIGNALL
'WOODLANDS' LONG MOSS LANE
NEW LONGTON
PRESTON
PR4 4XN
TEL 01772 613269

GEOFF WELCH
3 OAK GROVE
NEW LONGTON
PRESTON
PR4 4XT
TEL 01772 617791

JOYCE CUNNINGHAM
46 SHEEPHILL LANE
NEW LONGTON
PRESTON
PR4 4YN
TEL 01772 613503

ADRIAN UNDERWOOD
11 LATIMER DRIVE
NEW LONGTON
PRESTON
PR4 4ZL
TEL 01772 616873

FOLLOWING THE RECENT ELECTIONS THERE ARE NOW FOUR SEATS AVAILABLE ON LONGTON PARISH COUNCIL - THESE MAY NOW BE FILLED BY CO-OPTION - IF YOU ARE INTERESTED IN INFLUENCING HOW YOUR VILLAGE IS MANAGED THEN PLEASE CONTACT THE CLERK TO THE COUNCIL FOR MORE INFORMATION

CLERK AND RESPONSIBLE FINANCIAL OFFICER

W V MCENNERNEY-WHITTLE
7 BILSBOROUGH MEADOW
PRESTON PR2 1YY
TEL 01772 733829

E-MAIL: longtonparishcouncil@hotmail.co.uk

WEB SITE: <http://www.longtonparishcouncil.org>

PARISH COUNCIL MEETINGS ARE NORMALLY HELD ON THE FIRST TUESDAY OF EACH MONTH (EXC AUGUST) COMMENCING AT 7.30PM (AN ADJOURNMENT IS PROVIDED IN ORDER THAT THE COUNCIL MAY LISTEN TO REPRESENTATIONS FROM THE PUBLIC)

DATES AND VENUES OF FORTHCOMING MEETINGS

6TH SEPTEMBER 2011 @ NEW LONGTON VILLAGE HALL

4TH OCTOBER 2011 @ LONGTON LIBRARY

1ST NOVEMBER 2011 @ NEW LONGTON VILLAGE HALL